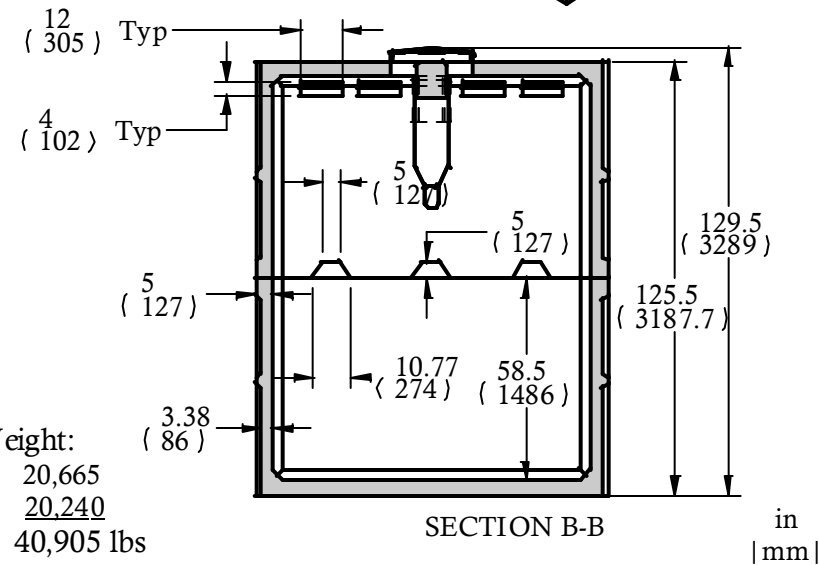
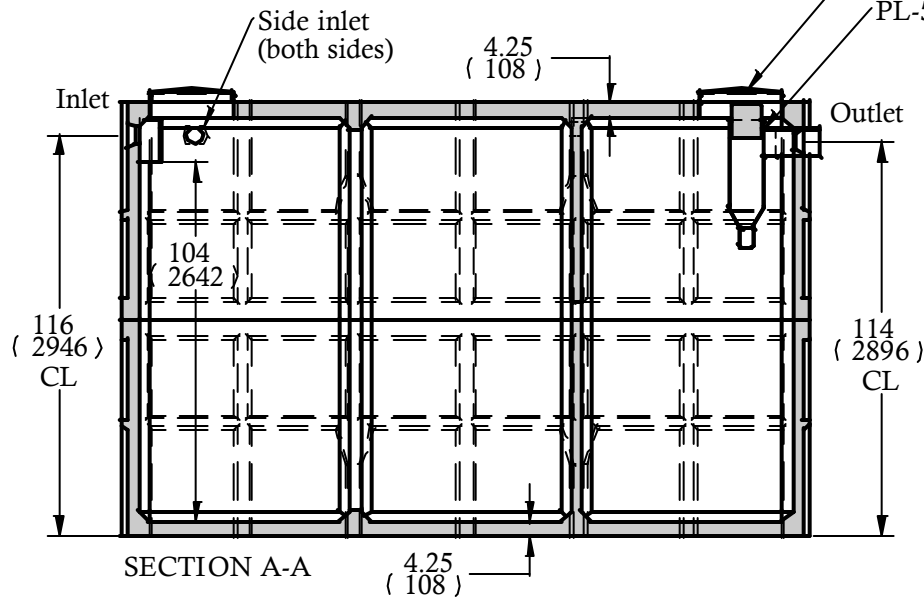
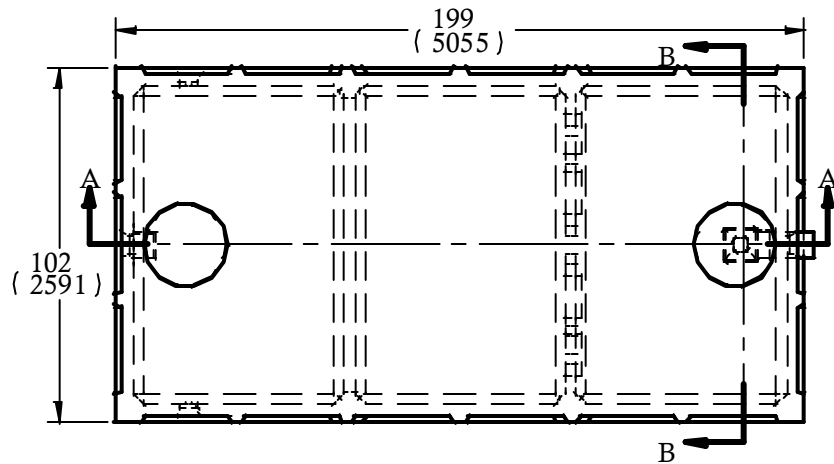
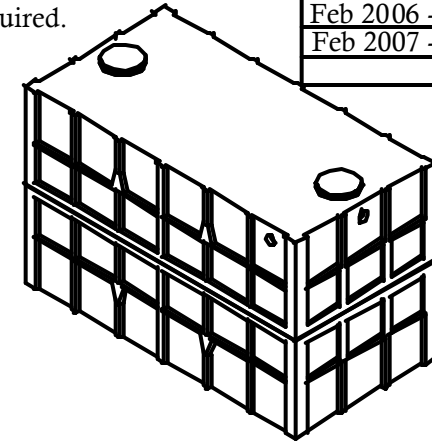


Drawn by: RM
Date: July / 2002
REVISIONS:
Feb 2004 - RM
Feb 2005 - RM
Feb 2006 - RM
Feb 2007 - TD

Delivery is made by crane-equipped trucks, excavation should be 1ft larger than tank dimensions and be accessible for unloading from the rear of the truck. Min overhead clearance of 18ft is required.



Unit Weight:
 Bottom: 20,665
 Top: 20,240
 Total: 40,905 lbs

Brooklin
 CONCRETE

CONSTRUCTION SPECIFICATIONS

Concrete Properties: 4500 PSI (32 MPa) Min Strength
 6-8% Air Entertainment
 24" I.D. HDPE lockable riser & cover
 Plastic Inlet & Outlet baffles
 Inlet & Outlet Polyseals accept up to 4" ABS pipe
 Swiftlift lifting anchors in side walls
 Meets CSA-B66-00
 Reinforcing meets G30.14-M1983

Brooklin (800)655-3430
 Newmarket (888)407-6443
 Huntsville (800)264-3302
 Haliburton (800)273-9084

**6600 Gallon
 30,000 Litre
 Septic Tank**

Max Cover: 30"	Unit Weight: 40,905 lbs
Model: 6600-2CH-2PC	CPA CERTIFIED
DRAWN BY: TD	DATE: 23 February 2007