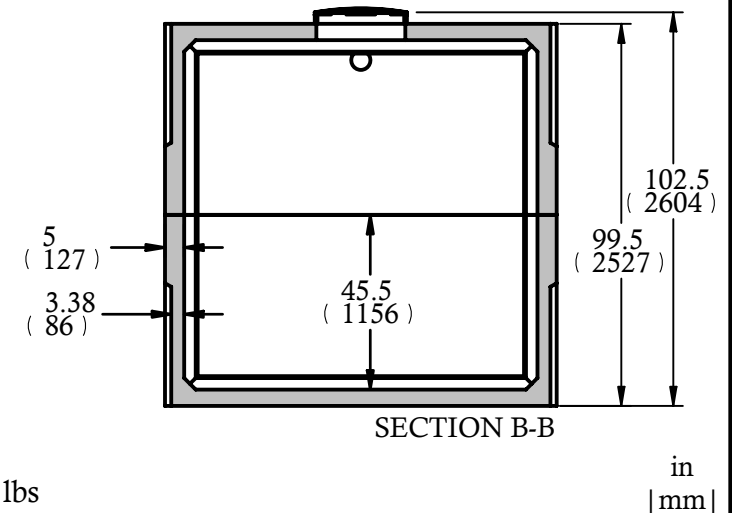
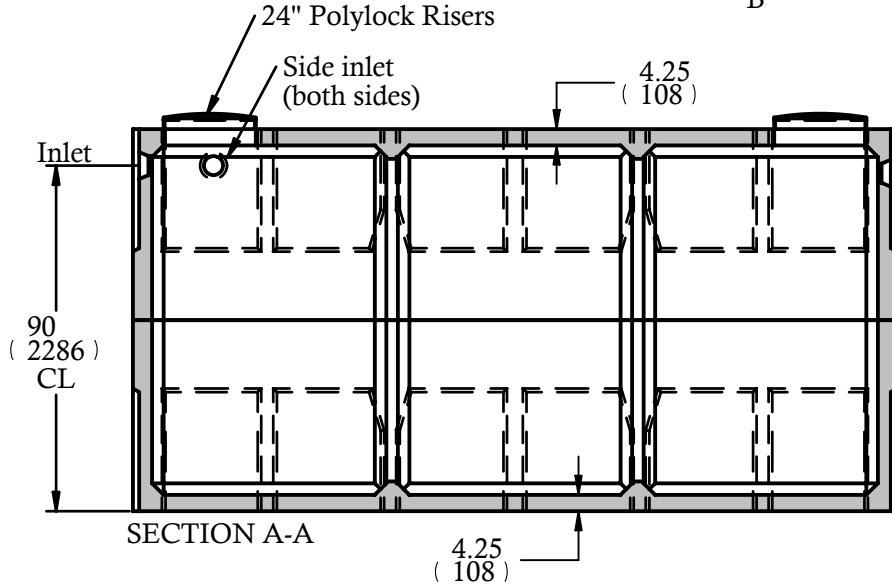
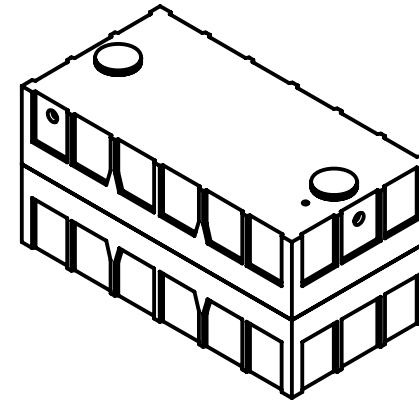
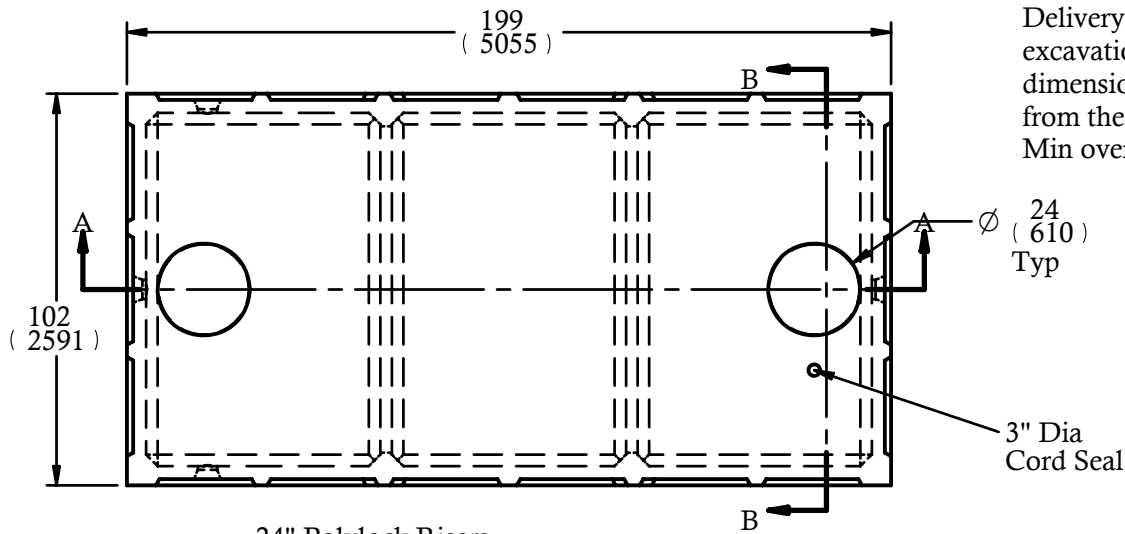


Drawn by: RM/KP
Date: FEB / 2002
REVISIONS:
Feb 2004 - RM
Feb 2005 - RM
Feb 2006 - RM
Feb 2007 - TD

Delivery is made by crane-equipped trucks, excavation should be 1ft larger than tank dimensions and be accessible for unloading from the rear of the truck. Min overhead clearance of 18ft is required.



Unit Weight:  
 Bottom: 16,690  
 Top: 16,570  
 Total: 33,260 lbs

**Brooklin**  
 CONCRETE

Brooklin (800)655-3430  
 Newmarket (888)407-6443  
 Huntsville (800)264-3302  
 Haliburton (800)273-9084

**CONSTRUCTION SPECIFICATIONS**

Concrete Properties: 4500 PSI (32 MPa) Min Strength  
 6-8% Air Entertainment  
 24" I.D. HDPE lockable riser & cover  
 Inlet polyseal accepts up to 4" ABS pipe  
 Dimensions in inches and (mm)  
 Meets CSA-B66-00  
 Reinforcing meets G30.14-M1983  
 Swiftlift lifting anchors in side walls

**5000 Gallon  
 22,750 Litre  
 Holding Tank**

Max Cover: 30"	Unit Weight: 33,260 lbs
Model: 5000-1CH-2PC	CPA CERTIFIED
DRAWN BY: TD	DATE: 18 February 2007