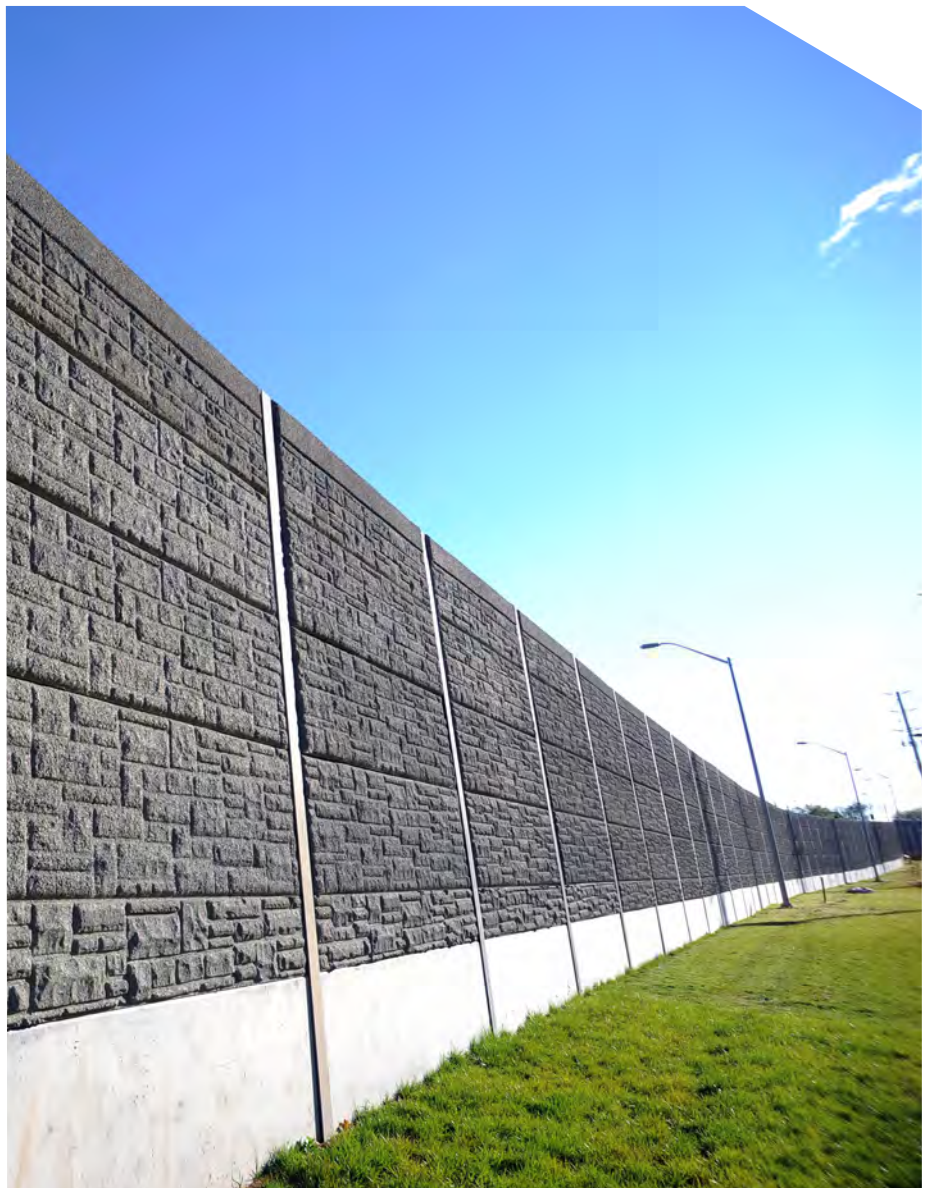


NOISE CONTROL / DURISOL PRECAST NOISE BARRIERS

# DURISOL PRECAST NOISE BARRIERS PRODUCT GUIDE

ATTRACTIVE, SOUND-  
ABSORPTIVE WALLS  
MADE OF DURABLE,  
FIELD-PROVEN  
DURISOL MATERIAL

Visual Appeal  
Panel and Post Design  
Acoustical Characteristics



## DURISOL PRECAST NOISE BARRIERS

Durisol is the proprietary name of a hard, durable, relatively lightweight and cementitious composition. It is made of chemically neutralized and mineralized organic softwood shavings which are specially processed to an acoustically engineered size and are bonded together under pressure with Portland cement.

The resultant material is sound-absorbent, noncombustible, vermin proof, and does not rot. Durisol is self-draining and highly resistant to weather exposure including: freeze-thaw, road de-icing chemicals and fungicides.

All Durisol noise barrier systems are engineered in house and specify the material for posts and the depth and diameter of footings. Standard steel posts or optional concrete posts can be accommodated.

### TYPICAL APPLICATIONS

- Roads and highways
- Bridges
- Acoustic enclosures
- Wind farms
- Hydro stations
- Residential developments

### STANDARD COLOURS



1004B NATURAL



1082D TAN



1538B GREY



02589 TAN



09187 GREY



11988 BEIGE

### PRODUCT FEATURES

- Lightweight
- Absorptive
- Non-combustible
- Vermin and fungus proof
- Thermally insulating
- Freeze-thaw resistant



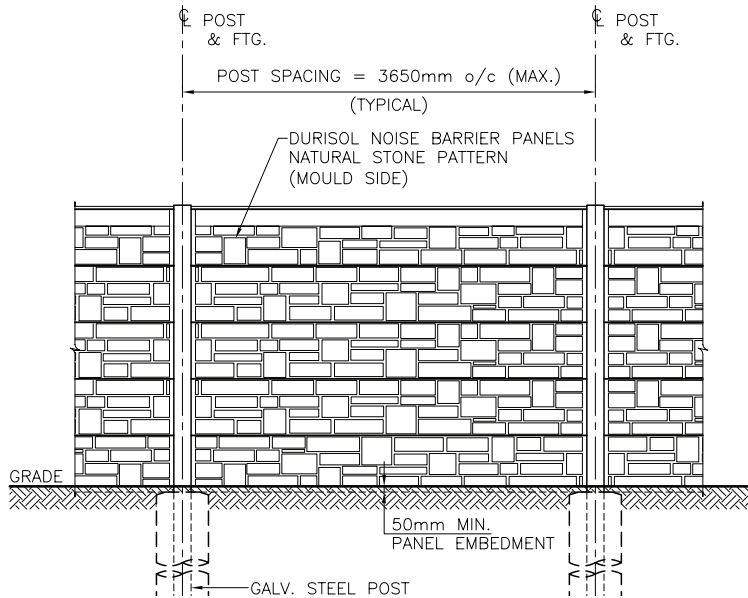
## NB 12 SYSTEM

The NB12 is a post and precast panel noise barrier system with posts typically located on 12ft (3.65m) centres. The NB12 system can be engineered for wall heights up to 33ft (10m) or more. Panels are a standard 12ft (3.65m) long by 20in (0.5m) high.

The standard NB12 system can be sound absorptive on one or both sides, or reflective. It can also incorporate noise reflective or transparent elements, as well as integrated traffic barriers and retaining wall panels.

The NB12 system is flexible in many ways. It is ideal for slope conditions, directional changes, and difficult site access situations. Precast panels can easily be modified for short bays on site.

### Simplified Technical Drawing



## STANDARD PATTERNS

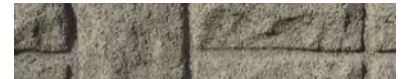
### Mould Side



BASKET WEAVE



PLAIN FLAT



NATURAL STONE



TRIPLE SPLIT

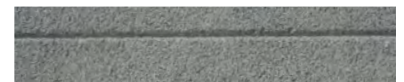


VERTICAL RIBS

### Lid Side



PLAIN FLAT



SINGLE SPLIT (TOP PANEL ONLY)



PRESSED ASHLAR



TRIPLE SPLIT

DURISOL PRECAST NOISE BARRIERS



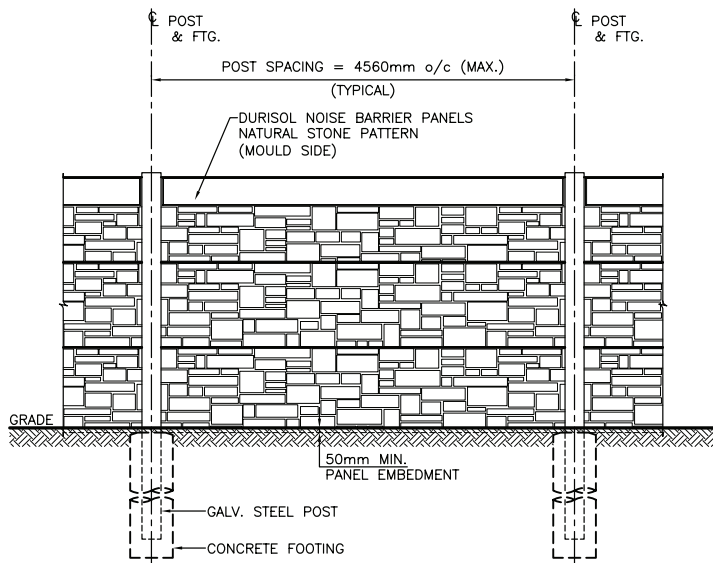
## NB 15 SYSTEM

The NB15 is a post and precast panel noise barrier system with posts located on 15ft (4.56m) centers. The NB15 system can be engineered for wall heights to 35ft (11m) or more. Precast panels are a standard 15ft (4.56m) long by 18-48in (0.46-1.22m) high.

The standard NB15 system is noise absorptive on both sides. It can also incorporate noise reflective or transparent elements, and integrated retaining wall panels.

The NB15 system offers 20% fewer posts than the NB12 system, which can result in meaningful cost savings depending on soil conditions and other required wall system elements.

### Simplified Technical Drawing



## STANDARD PATTERNS

### Mould Side



PLAIN FLAT



NATURAL STONE



VERTICAL RIBS



DRystack



SHIPLAP



RICHMOND FLUTE

### Lid Side



PLAIN FLAT



SINGLE SPLIT (TOP PANEL ONLY)



PRESSED ASHLAR



TRIPLE SPLIT

DURISOL PRECAST NOISE BARRIERS



## NB 24 SYSTEM

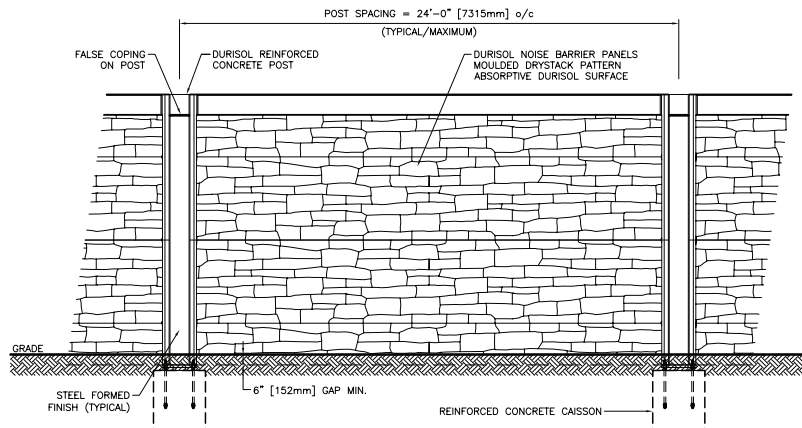
The NB24 is a post and precast panel noise barrier system with customized base spacing allowing for posts to be located on up to 24ft (7.3m) centers. Precast posts are standard with option for wide flange HDG steel posts.

The NB24 system can be engineered for wall heights to 35ft (11m) or more. Custom precast panels are available up to 24ft (7.3m) long by 84in (2.2m) high.

The NB24 system is noise absorptive on one side. It can also incorporate noise reflective or transparent elements, and integrated retaining wall panels. The NB24 system offers the longest post spacing of Durisol systems which can result in meaningful cost savings depending on soil conditions and other required wall system elements.

The NB24 system is ideal for long straight runs of wall with good site access, where noise absorption is not required on the residential side of the wall.

### Simplified Technical Drawing



## STANDARD PATTERNS

### Mould Side



NATURAL STONE



DRYSTACK

### Lid Side



ROLLED ASHLAR



ROLLED BRICK

DURISOL PRECAST NOISE BARRIERS

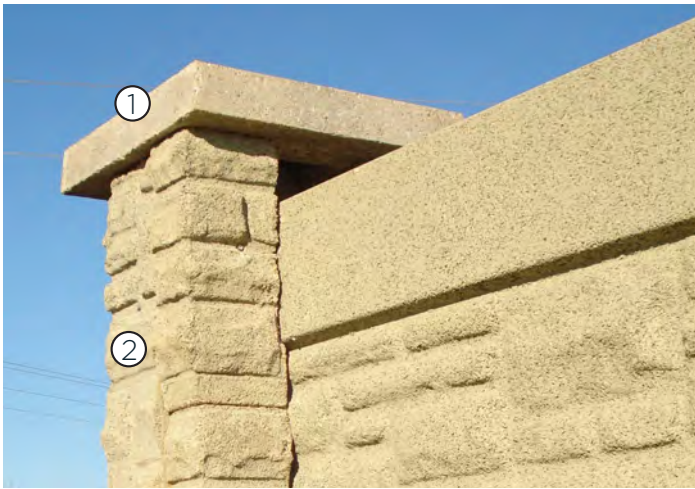


## ACCESSORIES

With over 30 years of designing and manufacturing highway noise barrier systems, Durisol has developed an impressive range of accessories and custom designs. Designers and owners may select from a wide variety of functional and aesthetic options to enhance the utility and attractiveness of their wall system.

Armtec has a large design and engineering group in house who can assist in developing a customized design to suit the needs of any project. This includes creating new designs and accessories to meet the requirements of the project. The standard high quality and high definition finishes can be customized to suit unique applications.

## STANDARD OPTIONS



### NOTE:

1. Caps / 2. Piers / 3. End Caps / 4. Post Facings



CUSTOM DESIGN ACCESSORIES - SIGN PANEL



### Brick Application

Many residential applications require a brick finish appearance to compliment the local aesthetic environment. Durisol has developed a precast brick noise wall finish that can be customized to suit each project requirement. Finishing details may include raised bottom and top copings, pier caps, and pier inserts above top of brick panel. Brick noise barrier systems are available in standard reflective concrete or optional noise absorptive Durisol.

The standard brick system features brick piers at every post location, with spacing 15 ft (4.56m) on center. Panels are supplied full height for systems up to 8ft (2.6m) high.

Durisol's standard noise barrier systems incorporate galvanized steel posts. Optional post facings and piers are available on one or both sides of the barrier system enhancing the appearance.

A wide variety of optional accessories are available to enhance the functionality and attractiveness of Durisol wall systems.

Some of the more common accessories are:

- Piers
- Post facings
- Copings
- Access openings

### Door Openings

In addition to the wide range of standard textures and patterns, custom systems can be developed to suit almost any aesthetic or functional requirement. Armtec's experienced in-house team of engineers and professionals can assist designers, specifiers and owners at the project design stage to develop a custom solution where required.

Access openings through the wall can be easily customized to suit project requirements. Access openings may be required for:

- Vehicle access gates
- Man doors
- Drainage
- Grates
- Fire hose access openings
- Louvered
- Flood control panels
- Pedestrian walkway entrances



CUSTOM DESIGN ACCESSORIES



### Integrated Noise Barrier / Retaining Wall

The Durisol Combination Retaining Wall/Noise Barrier System is ideal for situations where there are grade differences between the two sides of the noise barrier – as often occurs with road widenings. In most cases, it is desirable to locate both the retaining wall and the noise barrier as close as possible to the property line.

Both the noise barrier and retaining wall panels can be stacked on a single set of footings, minimizing space requirements.